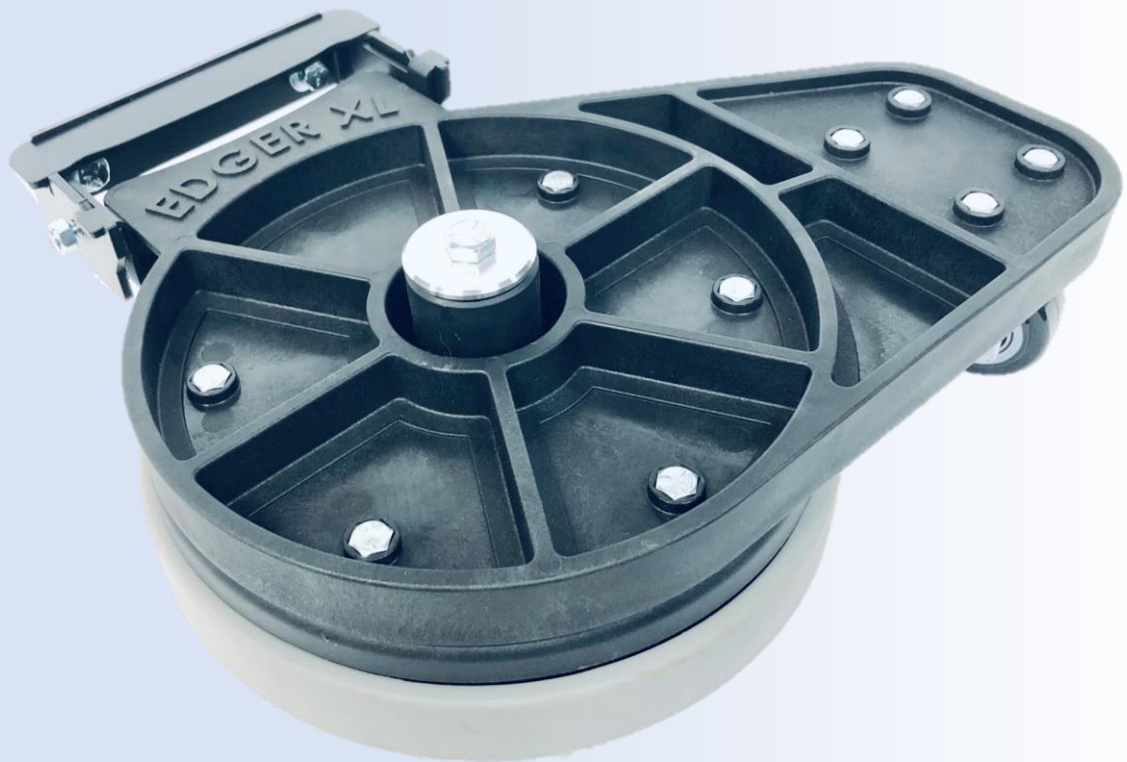


# Operating Instructions

## EDGER XL



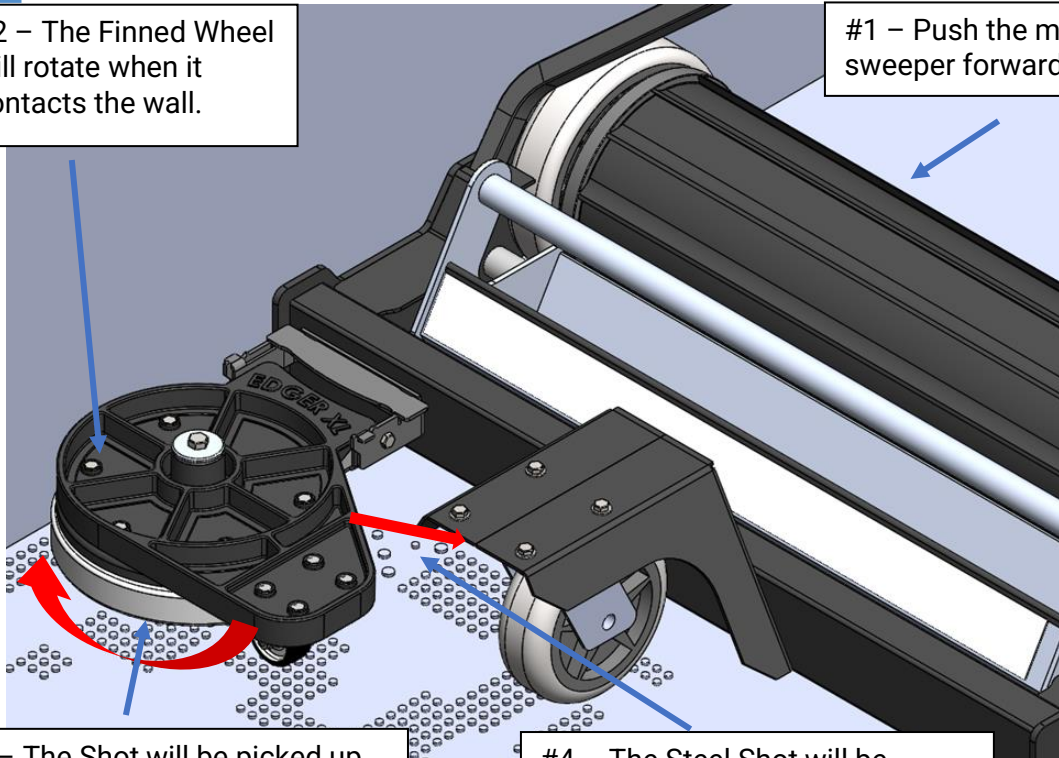
**Bluestreakequipment** MAGNETICS  
APPLICATION DRIVEN DESIGN

Bluestreak Equipment  
1645 Hwy #3, Delhi, Ontario, Canada N4B 2W6

# Overview of Operation

#2 – The Finned Wheel will rotate when it contacts the wall.

#1 – Push the main sweeper forward.



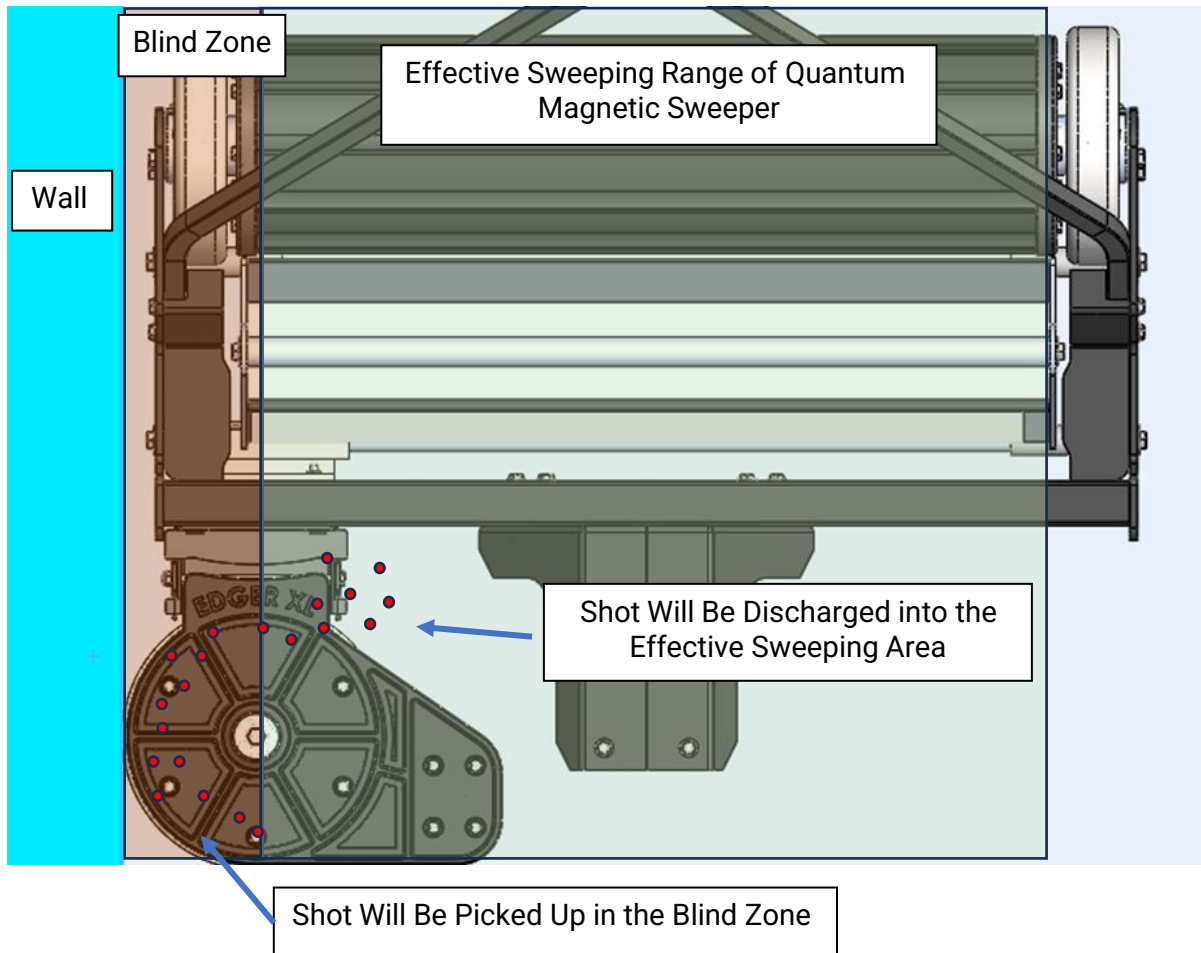
#3 – The Shot will be picked up at the front, and then transferred around by the rotation of the finned wheel.

#4 – The Steel Shot will be discharged in front of the main sweeper so it can then be picked up by the main sweeper.

Operation of the Edger XL magnetic sweeper is straight forward. Push the main sweeper (Quantum) along the wall. Keep the side of the Edger XL sweeper in contact with the wall with some pressure. The shot will be picked up and transferred around by the rotation of the finned wheel and discharged at the location in front of the main sweeper (Quantum). As the operator moves forward, the Edger XL will be driven by the wall and bring the shot at the corner into the main sweeper's sweeping range continuously.

# 1. Picking Up Shot in Blind Zone

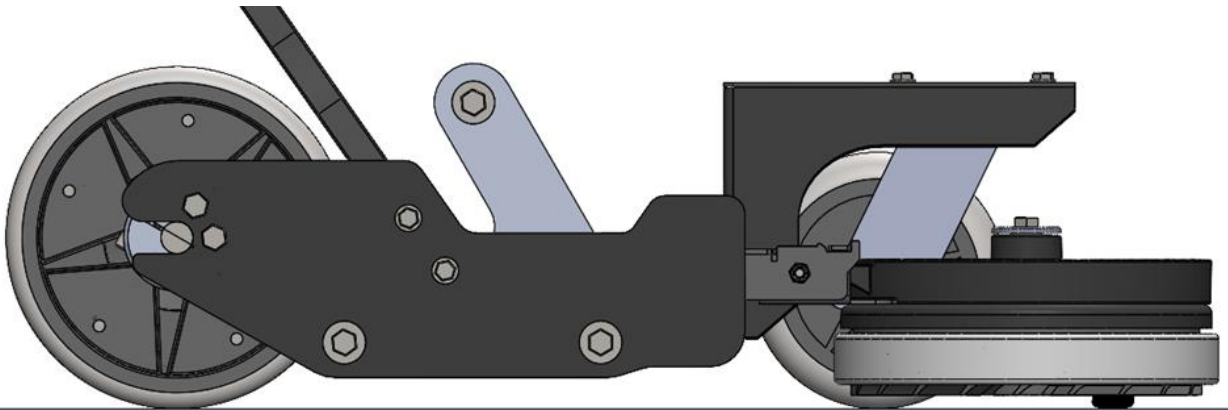
Top View



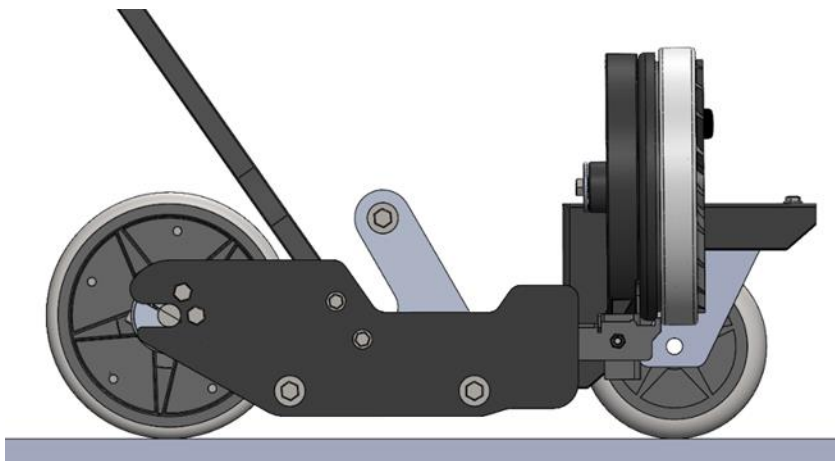
Due to the width of the wheel, end cap and end plate, there will be a gap (Blind Zone) between the wall and the magnet in the main sweeper (effective sweeping range). The Edger XL will fill this gap and bring the shot within the blind zone into the main sweeper's sweeping range.

## 2. Flip Up the Edger XL When Unused

Side View (Down)



Side View (Up)



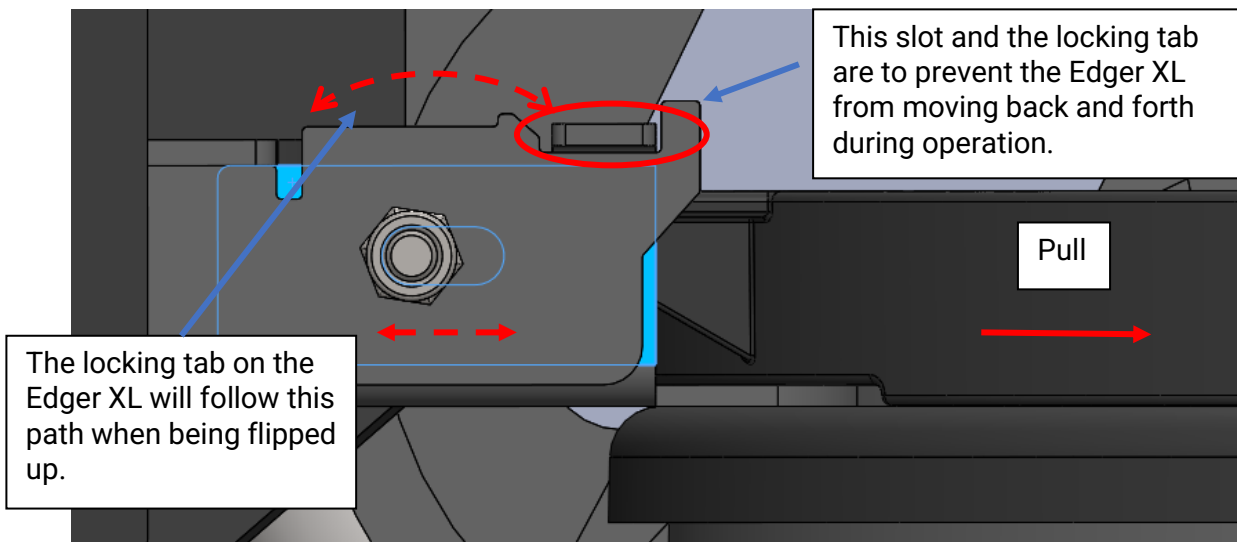
The Edger XL can be flipped up and locked in an upward position when unused. This can make transportation and storage of the sweeper easier.

See next 2 pages for detailed explanation of the locking feature.

# The Locking Feature

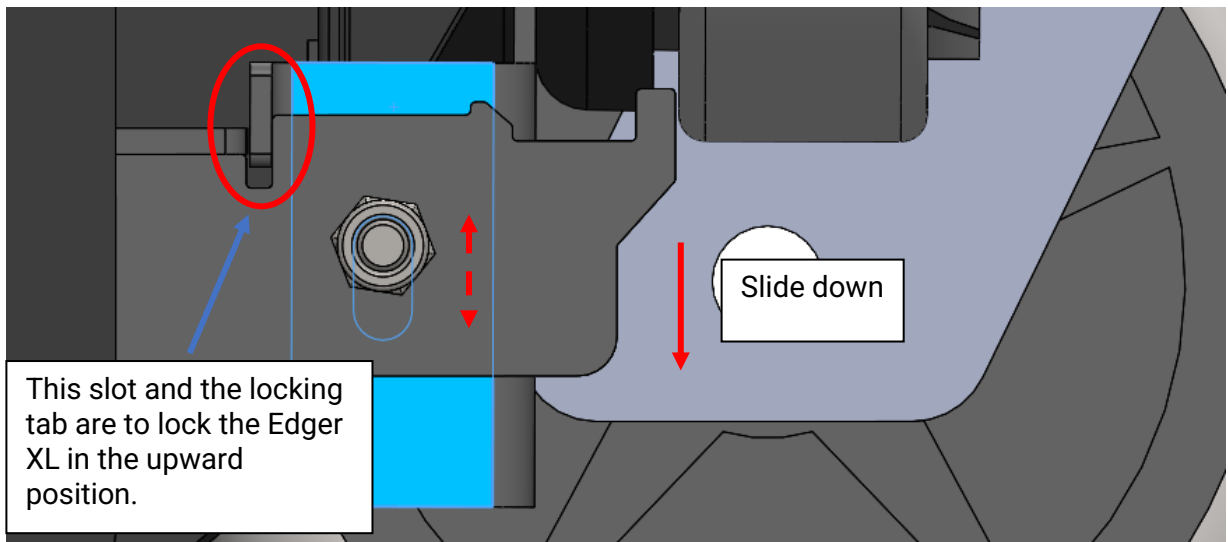
Due to the weight of the Edger XL, it uses a locking feature to hold it in the upward position.

The mounting tabs on Edger XL are slotted. When pulled till the end of the slot, the Edger XL can be flipped up easily.



# The Locking Feature

When lifted to the vertical position, release the pull. The weight of the Edger XL will make it slide down the slot, and the locking tab will sit in the slot to lock it in place.





## 3. Parts Availability

The Edger XL will be shipped fully assembled. Though all parts are still available for the magnetic sweeper from your dealer or directly from Bluestreak Equipment at [www.bluestreakequipment.com](http://www.bluestreakequipment.com)